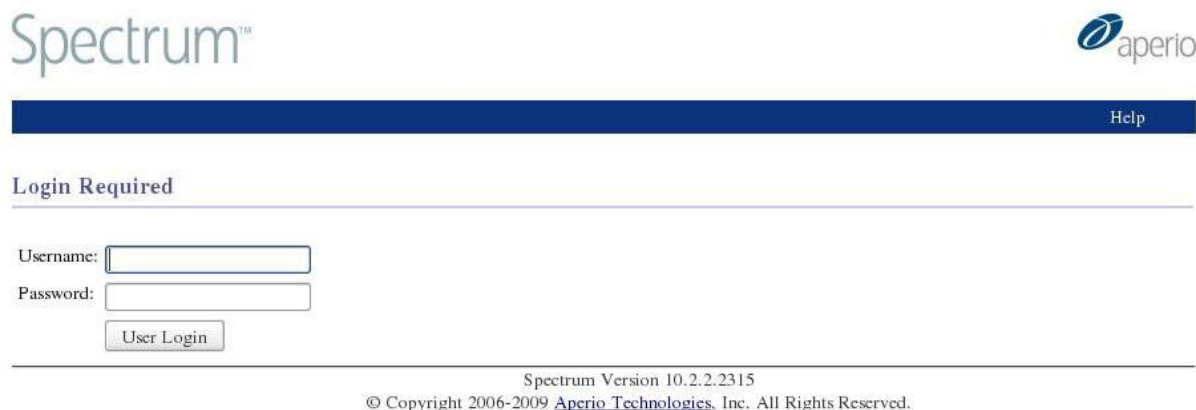


# Aperio Spectrum User Guide

Please contact us at [hudsen@ncl.ac.uk](mailto:hudsen@ncl.ac.uk) to obtain a user name and password.

After logging in:



A new window opens. Each set of H&Es is displayed as a folder on the left hand side. By default 20 folders are displayed per page – there may be more than one page of results.



Clicking on the yellow folder icon next to the stage and embryo number brings up thumbnails of all the scanned slides from that embryo.

Spectrum™



User: Role: Viewer      Projects    Specimens    Digital Slides    Administrative    Help    Font Size    Log off

\* Project Details

\* Project Specimens

\* Project Digital Slides

View Images | Open Data | Annotations

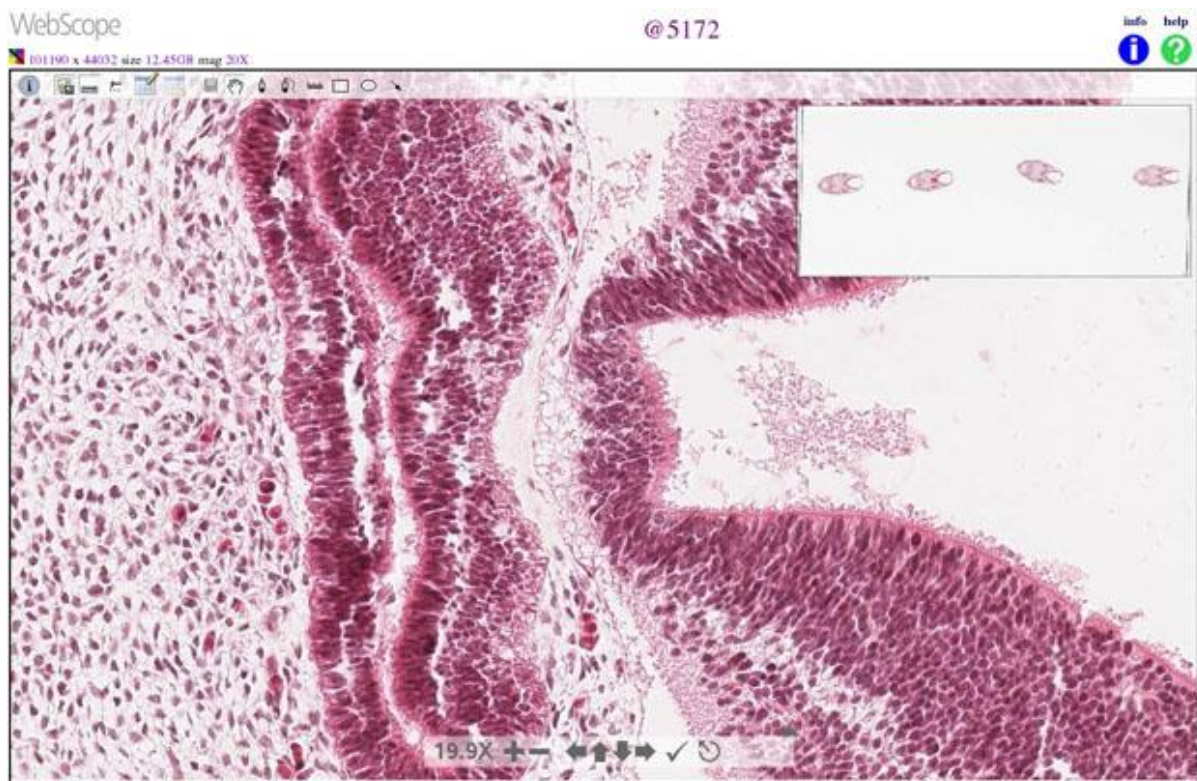
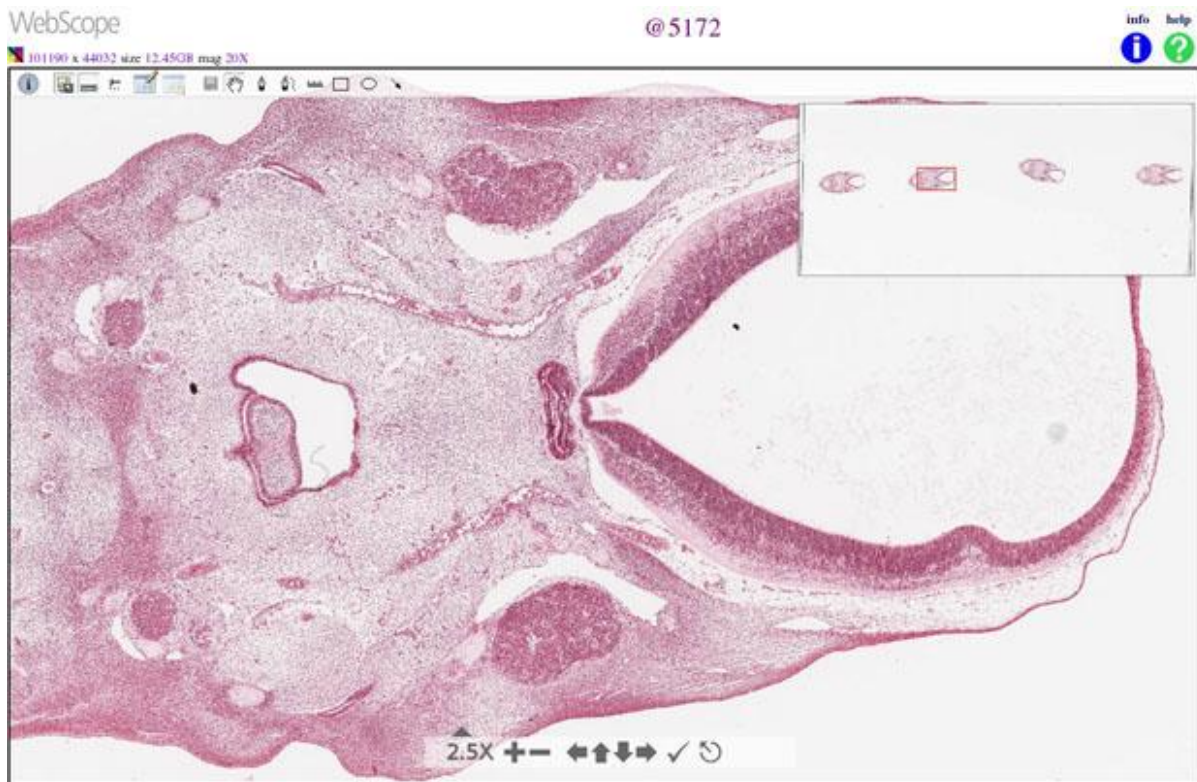
Thumbnail	Image ID	Captured Date	embryo number	circles stage	HDUR Slide no.	Stain or gene	AS_S	File Location	probe id	experiment number	Data Group	project id
	5160	2010-02-10 09:26:41	N365	CS17	1	H&E		\\ccria\images\2010-02-10\5160.svs			CS17_N365	
	5162	2010-02-10 09:35:24	N365	CS17	5	H&E		\\ccria\images\2010-02-10\5162.svs			CS17_N365	
	5164	2010-02-10 09:47:22	N365	CS17	9	H&E		\\ccria\images\2010-02-10\5164.svs			CS17_N365	
	5166	2010-02-10 10:03:38	N365	CS17	13	H&E		\\ccria\images\2010-02-10\5166.svs			CS17_N365	
	5167	2010-02-10 10:16:58	N365	CS17	17	H&E		\\ccria\images\2010-02-10\5167.svs			CS17_N365	
	5168	2010-02-10 10:25:52	N365	CS17	25	H&E		\\ccria\images\2010-02-10\5168.svs			CS17_N365	
	5169	2010-02-10 10:36:01	N365	CS17	45	H&E		\\ccria\images\2010-02-10\5169.svs			CS17_N365	

Sections are usually mounted 4 per slide. The first section is furthest away from the frosted end of the slide and appears here on the right hand side of the image (as shown above in red).

Access the scanned slide by clicking on the thumbnail.



By using the tools at the bottom of the page (circled in red above) you can pan across the slide and zoom in up to the full resolution of x20.



For further information please contact us at [husden@ncl.ac.uk](mailto:husden@ncl.ac.uk).